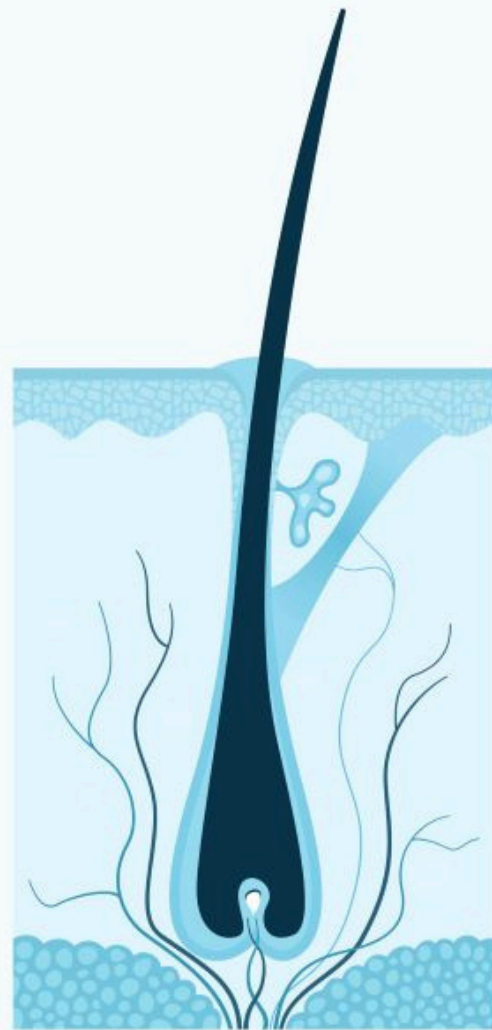
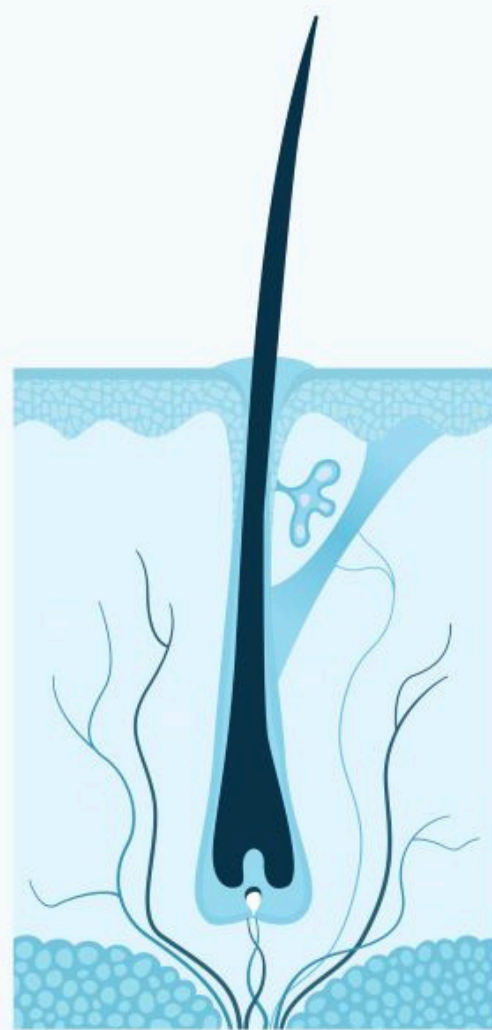


# The Hair Growth Cycle



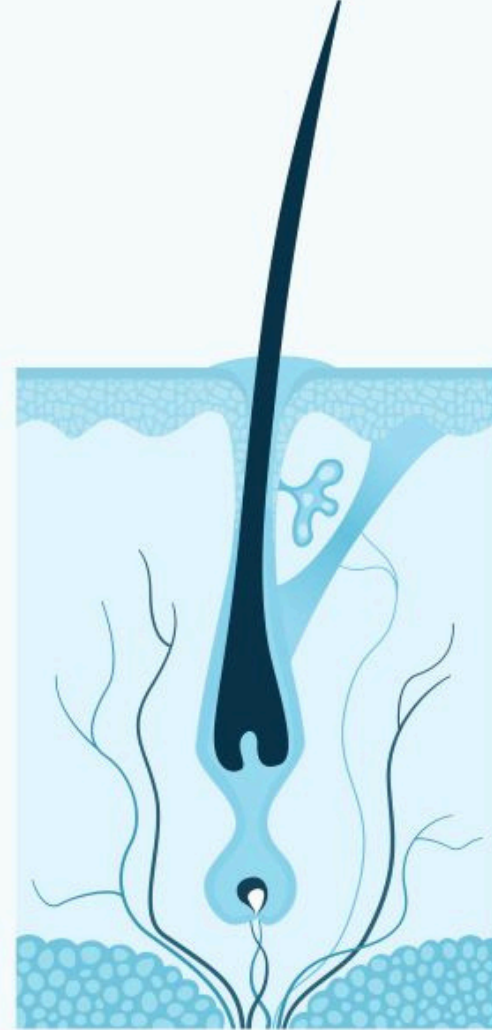
**Anagen Phase**  
(Growing Phase)

2-7 Years



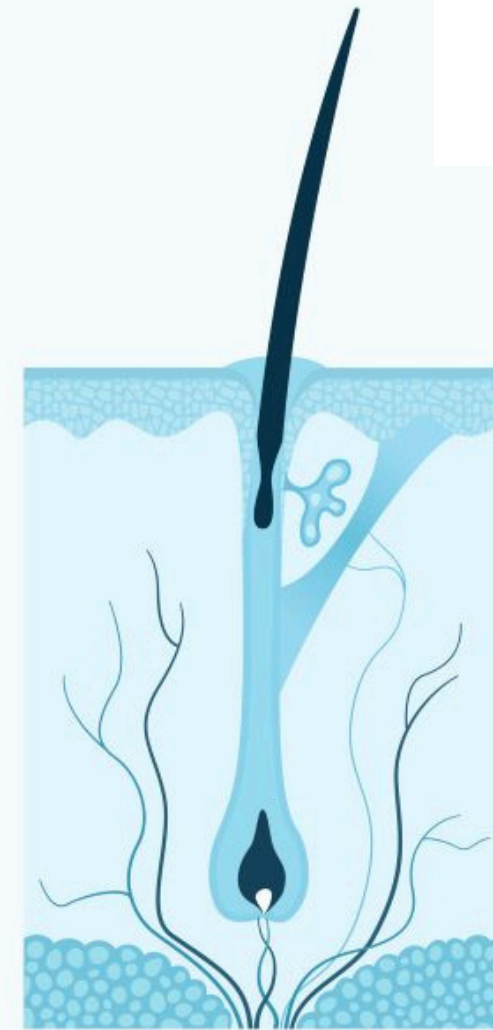
**Catagen Phase**  
(Transition Phase)

2-3 Weeks



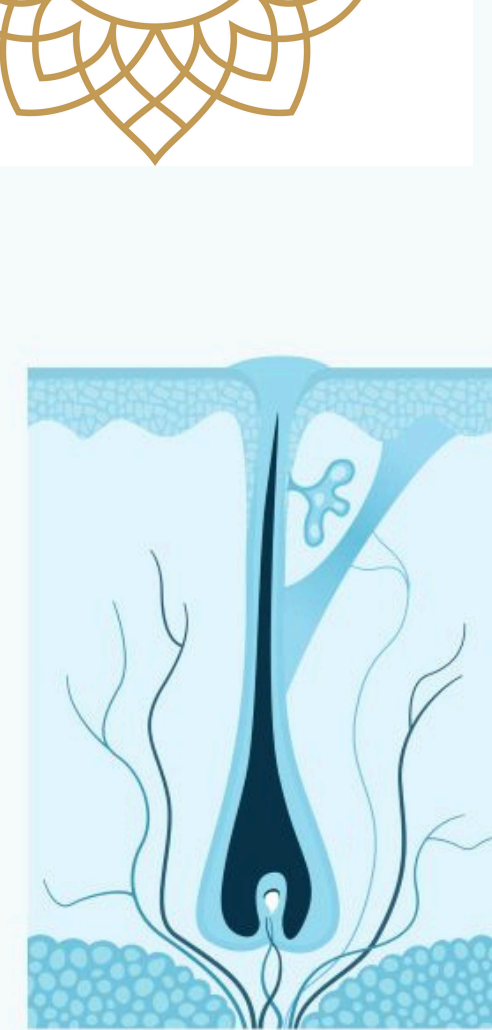
**Telogen Phase**  
(Resting Phase)

2-4 Months



**Exogen Phase**  
(Shedding Phase)

1-3 Days



**Early Anagen Phase**  
(New Growing Phase)

Cycle Restarts